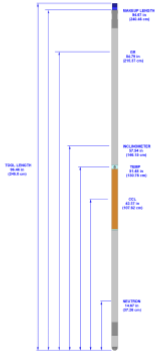


**GAMMA RAY - CCL - NEUTRON - INCLINOMETER - TEMP -
PTX - 1 11/16 IN.**



SKU: 050-GN170-00CT

Categories: [Cased Hole Wireline](#), [CCL](#), [Formation Evaluation](#), [Gamma Ray & CCL](#), [Inclinometer](#), [Neutron](#), [PTX](#), [Temperature](#)

PRODUCT DESCRIPTION

Ratings & Dimensions

| | |
|-------------------------------------|---|
| Max Temperature | 350°F (177°C) for 4 hours |
| Maximum Pressure | 20,000 psi (138 MPa) |
| Outer Diameter | 1.69 in (42.93 mm) |
| Length | 96.46 in (2450.084 mm) (M/U length 94.67 in (2404.62 mm)) |
| Weight | 35.0 lb (15.9 kg) |
| Min Csg/Tbg OD | 2.38 in (60.45 mm) |
| Max Csg/Tbg OD | 7.0 in (178.0 mm) |
| Tensile Strength¹ | Tension: 65,000 lb Compression: 130,000 lb Torque: 150 ft-lb |
| Measure Points | GR: 84.79 in (2153.67 mm) CCL: 42.37 in (1076.2 mm) NEU: 14.67 in (372.62 mm) INC: 57.54 in (1461.52 cm) TEMP: 51.48 in (1461.52 cm) |

Borehole Conditions

| | |
|-------------------------|---|
| Borehole Fluids | Salt, Fresh and Oil |
| Logging Speed | Recommended: 60 ft/min (18.2 m/min) Maximum: 100 ft/min (30.5 m/min) at 0.08 ft (.02 m) sample rate |
| Tool Positioning | Centralized Eccentralized |

Calibration

| | |
|----------------|------------------|
| Primary | Houston API Pits |
|----------------|------------------|

Wellsite Verifier

Thorium Blanket

Electrical Specifications

Operating V / Current

130V DC @ 45 mA

Hardware Characteristics

| | Gamma Ray | Casing Collar Locator | Neutron | Inclinometer |
|--------------------------|---|--------------------------|----------------------------------|----------------------|
| Sensor Type | Thallium Activated Sodium Iodide Crystal | Dual Magnet, Center Coil | Helium-3 filled Neutron Detector | 3-Axis Accelerometer |
| Transmission Type | Digital Telemetry | Line Wobble or Telemetry | Digital Telemetry | Digital Telemetry |
| Data Rate | 20 frames / sec @ 20 kHz | | | |
| Combinability | RADII & CBT (Bottom only) | | | |
| Connections | GO top, Source sub bottom (no feedthrough) | | | |
| Temp Specs | Sensor: RTD (1000) Trans Type: Digital Telemetry Prim Curve: TEMP(°F/C) Calibration: 2pt linear | | | |

Measurements

| | Natural Gamma Radiation | Magnetic Flux Lines | Thermal Neutron Detector | Gravity Vector |
|------------------------|---|---|--------------------------|----------------|
| Principle | | | | |
| Range | 0-10,000 cps | 2.38 in to 7.0 in (60.452 mm to 178.0 mm) | 200 to 2,000 cps | ± 2 g |
| Vert Resolution | 6.0 in (152.5 mm) | NA | NA | NA |
| Accuracy (1SD) | ± 5% | NA | ± 0.07% | ± 0.5 degrees |
| Sensitivity | ~0.998 cps/API unit | NA | 15 cps/nv | 900 lsb/g |
| Primary Curves | GR (API) | CCL (mV) | NEU (API) | Inclination |
| Secondary | Head Voltage, Internal Temperature (Telemetry Only) | | | |

¹Strengths apply to new tools at 70°F (21°C) and 0 psi.

Version Control: 2021.12.09

On-line specifications are for REFERENCE ONLY and subject to change without notice. DO NOT USE FOR FIELD OPERATIONS.